

P R E S S



KIRAKIRA
BY SUZANNE SOMERSALL



SUZANNE
SOMERSALL
LUXE COLLECTION



SUZANNE SOMERSALL BORN AND RAISED IN NEW ORLEANS, SUZANNE'S LOVE FOR JEWELRY AND ADORNMENT BEGAN AT AN EARLY AGE. LIVING IN THIS CARNIVAL CITY WITH FRENCH AND SPANISH INFLUENCES, THE OPULENT ARCHITECTURE, COSTUMES, AND ENVIRONMENT OF NEW ORLEANS FILLED HER WITH A GREAT APPRECIATION FOR DESIGN. THE ESSENCE OF THIS MASQUERADING CITY IS CAPTURED IN HER SIGNATURE - THE CARNIVAL MASK.

HER INTEREST IN FORM AND SHAPE GREW AS SHE STUDIED THE SILHOUETTED ARTWORK OF KARA WALKER AS AN UNDERGRADUATE AT BROWN UNIVERSITY, AND THEN AS A GRADUATE STUDENT AT THE RHODE ISLAND SCHOOL OF DESIGN. SHE WENT ON TO PURSUE HER PASSION FOR DESIGN IN ATELIERS IN TUSCANY AND HER OWN IN JAPAN.

THESE LOCATIONS, VARIED IN THEIR PATTERNS, LANDSCAPES, AND HISTORIES, FORM THE DIVERSE COLLECTION OF SUZANNE'S JEWELRY. OXIDIZED CHERRY BLOSSOMS, PEARL STUDDED ANTLERS, EMPTY BAROQUE CAMEOS: ALL HER INSPIRATIONS BEGIN AS SILHOUETTES AND END AS INTRICATE ADORNMENTS.

SUZANNE'S FASHION JEWELRY BRAND 'KIRAKIRA' AND LUXURY JEWELRY LINE 'SUZANNE SOMERSALL' BOTH EMPHASIZE ELEGANT, ORGANIC FORMS ALONGSIDE REFINED ARCHITECTURAL PIECES. THE MATERIALS OF THE KIRAKIRA LINE, MEANING SHIMMERING IN JAPANESE, RANGE FROM CRYSTAL AND GOLD VERMEIL TO SEMI-PRECIOUS METALS AND GEMSTONES. THE LUXURY LINE, SUZANNE SOMERSALL, IS FORMED SOLELY FROM PRECIOUS METALS AND GEMSTONES AND ALSO INCLUDES A WEDDING COLLECTION WITH MODERN YET NOSTALGIC ENGAGEMENT RINGS AND WEDDING BANDS.

DESIGNER
SPOTLIGHTS



FASHIONMANNUSCRIPT

APR 2011



CAPITOL FILE

JAN 2010



WASHINGTONIAN

APR 2009



OPRAH

2011

STARLETTE COLLECTION



MORE

OCT 2011

MARRAKECH COLLECTION



PEOPLE STYLE WATCH

OCT 2011

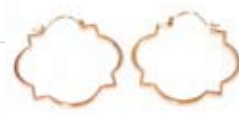
STARLETTE COLLECTION



HEALTH

OCT 2011

BELLE EPOQUE COLLECTION



REAL SIMPLE

AUG 2011

MARRAKECH COLLECTION



SELF

AUG 2011

KIRAKIRA COLLECTION



FITNESS

JUL/AUG 2011

MARRAKECH COLLECTION



NY POST

JUL 2011

MARRAKECH COLLECTION



REDBOOK

JUN 2011

KEY NECKLACE



PEOPLE STYLE WATCH

JUN 2011

SAKURA COLLECTION



OK!

MAY 2011

BADALA COLLECTION



BROWN ALUMNI MAGAZINE

DEC 2010

SAKURA ■ ANTLER ■ BADALA COLLECTIONS



WASHINGTON POST EXPRESS

DEC 2009

KIRAKIRA COLLECTION



DC MODERN LUXURY

2009

SAKURA COLLECTION



CAPITOL FILE

2009

ANTLER COLLECTION



INSIDE WEDDINGS

SUMMER 2011
KIRAKIRA COLLECTION



THE KNOT

SUMMER 2011
SAKURA COLLECTION



BRIDES

AUG 2011
BARCELONA COLLECTION



CANADA WEDDING BELLS

AUG 2011
SAKURA COLLECTION



WASHINGTON POST EXPRESS

APR 2010
SAKURA COLLECTION



STYLE ME PRETTY

SPRING 2010
STARLETTE COLLECTION

TELEVISION
AND
CELEBRITY
SHOWCASE



ALISON SWEENEY

AUG 2011

(ACTRESS/HOST OF 'BIGGEST LOSER')

WEARING ETOILES PAVE STUDS
FOR SELF COVER SHOOT



ELSA PATAKY

JUN 2011

(MODEL/DIRECTOR)

SUMMER AFTERNOONS



NBC NEW YORK

MAR 2011

TV HOST SARA GORE WEARS ROSE LACE
CIRCLE EARRINGS



NBC WASHINGTON D.C.

APR 2008

DAILY CANDY'S DC EDITOR FEATURES
SAKURA COLLECTION

PHILAN
THROPY

7 OF 7



BCRF INITIATIVE

2011

PSW ■ BRIDES ■ HEALTH

20% ROSE GOLD SALE DONATION

TO THE BREAST CANCER RESEARCH FOUNDATION



JAPANESE TSUNAMI RELIEF EFFORT

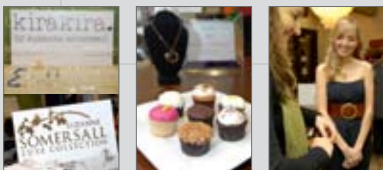
2011

RELATIVELYCHIC ■ HERCAMPUS ■ STYLE BAKERY

PSW ■ LONG ISLAND PRESS ■ POSHGLAM



'JEWELS FOR JAPAN' INITIATIVE. 20% OF ALL SALES DONATED TO RED CROSS JAPAN RELIEF FUND. 100% OF PROCEEDS FROM LIMITED EDITION 18K ROSE GOLD WHITE DIAMOND SAKURA CHARM DONATED TO RED CROSS.



WOUNDED WARRIOR PROJECT

NOV 2010

ANNUAL VETERAN'S DAY FUNDRAISER AT GINGER BOUTIQUE.

DONATION OF 30% OF ALL SALES AND 100% OF PROCEEDS

FROM RAFFLE FOR \$1000 GIFT CERTIFICATE FOR A PIECE

OF CUSTOM JEWELRY DESIGNED BY SUZANNE.



SOTHEBY'S AUCTION IN NEW YORK

NOV 2010

\$1,000 JEWELRY DONATION TO BENEFIT THE

NEW YORK PLAYGROUND PROJECT.

SUZANNE SOMERSALL
304 WELLINGTON DRIVE
CHARLOTTESVILLE, VA 22903
SUZSOMER@GMAIL.COM

KIRAKIRAJEWELRY.COM
[T] 434.987.6500

MARIPOSA COMMUNICATIONS
167 MADISON AVENUE, STE 204
NEW YORK, NY 10016
INFO@MARIPOSA-COMMUNICATIONS.COM

MARIPOSA-COMMUNICATIONS.COM
[T] 212.534.7939

